



expeditionsearch

Please Select Region

Please Select Month

SUBMIT >> RESET >>

Antarctica European Arctic Alaska Ecuador Russian Coast Kimberley Coast Trekking PNG Activities Expedition Calendar Track My Trip

VIEWOURBROCHURES SIGNUPTOURNEWSLETTER SPEAKTOANEXPERT

Spirit of Enderby



The *Spirit of Enderby* is sister-ship to our *Polar Pioneer*, and is near identical in layout and on board facilities. She is a fully ice-strengthened expedition vessel, built in 1984 for polar and oceanographic research and is perfect for expedition cruising.

She carries just 50 passengers and was refurbished in November 2009 to provide comfortable accommodation in twin share cabins approximately half of which have private facilities. All cabins have outside windows or portholes and ample storage space.

On board there is a combined bar/library lounge area and a dedicated lecture room. The cuisine is excellent and is prepared by top Australian and New Zealand chefs.

The real focus and emphasis of every expedition is getting you ashore as often as possible for as long as possible with maximum safety and comfort. Our Expeditions are accompanied by some of the most experienced naturalists and guides, who have devoted a lifetime to field research in the areas that we visit. The ship is crewed by a very enthusiastic and most experienced Russian Captain and crew.

The name Spirit of Enderby honours the work and the vision of the Enderby Brothers of London. The Enderby Captains were at the forefront of Antarctic exploration for almost 40 years in the early 1800's. It also celebrates Enderby Island, arguably the greatest Subantarctic Island in the world.

Technical description

- Classification: Russian register KM ice class
- Year built: 1984
- Accommodation: 50 berths expedition
- Shipyard: Finland
- Main engines: power 2x1560 bhp (2x 1147 Kw)
- Register: Russia
- Maximum speed: 12 knots (2 engines),
- Cruising speed: 10 knots(one engine)
- Bunker capacity: 320 tons

Cabin details

Heritage Suite: Has a large lounge area, a separate bedroom with double bed, a single bed in the lounge, writing desk, wardrobe, drawers. There is a private bathroom with shower, toilet and washbasin. There are large forward and side facing windows to allow great views.

Mini Suites: Have a separate bedroom with a double bed and a single bed or a sofa in the lounge, wardrobe, drawers, a desk and a private bathroom with shower, toilet and washbasin. The Mini Suites have windows.

Superior Plus cabins: Have two lower berths, wardrobe, drawers, desk, a private bathroom with shower,

“ @sebculthard @ShackletonEpic @whyteandmackay @BritishBanjo @FaunaFloralnt How time flies! Proud to have taken part in it!

 [View all tweets](#)

Thanks again to the team at Aurora your experience, professionalism and passion for the job is second to none

Liz Allen, 2012

I always feel when I leave an Aurora voyage that I have got more than my monies worth!

Tonia Williams, 2012

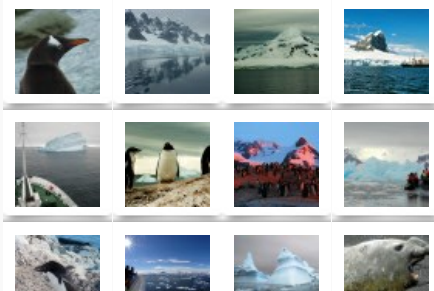
We were "gifted" with this voyage but now that we are aware of the "awesomeness" of Aurora we will be saving for our next one

Josie Hall, 2012

I think we saw and did more in the first 24 hours with Aurora than we did on a larger ship in 5 days

Maureen Schuyt, 2012

Latest Expeditioner Submissions



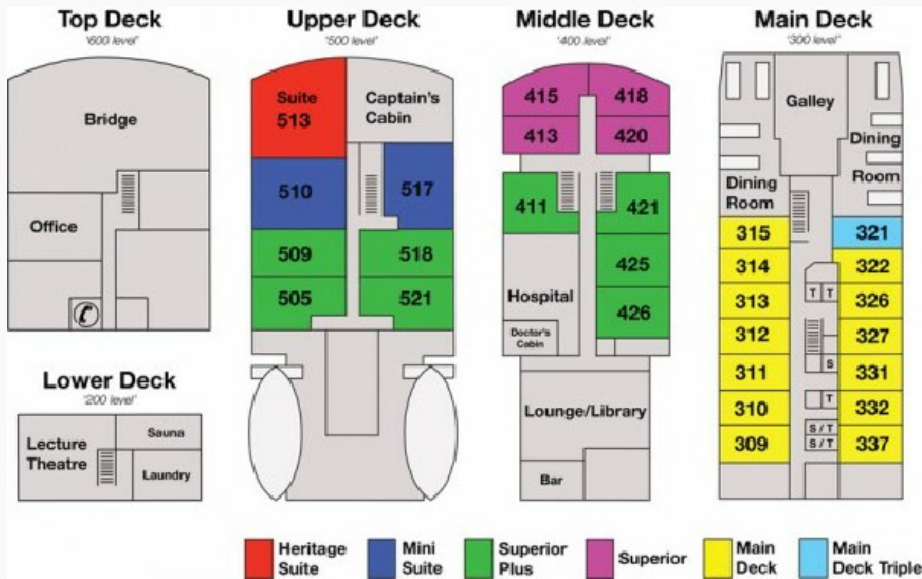
toilet and washbasin. These cabins have windows.

Superior cabins: Have bunks (an upper and lower berth), wardrobe, drawers, a desk, a private bathroom with shower, toilet and washbasin. These cabins have windows.

Main deck cabins: Have two lower berths, wardrobe, drawers, a desk, washbasin and porthole. The nearby showers and toilets are shared with other Main deck cabins.

Main deck triple: Has one bunk (one upper and one lower) and one lower berth, wardrobe, drawers, a desk and wash basin. The nearby showers and toilets are shared with other Main deck cabins.

Deckplan



Copyright © 2014 Aurora Expeditions. All rights reserved. | [Privacy Policy](#) | [Terms & Conditions](#)

[f Like](#) 0
 [t Tweet](#) 0
 [g+1](#) 0

Expeditions

- Antarctica
- European Arctic
- Alaska
- Ecuador
- Russian Coast
- Kimberley Coast
- Trekking
- PNG
- Activities
- Expedition Calendar

Ships

- Ship Information
- Where Are Our Ships

Community

- Photo Gallery
- Video Gallery
- Events
- Voyage Logs

About Us

- About Aurora
- Office Staff
- Expedition Staff
- Our Environment
- Affiliations
- Testimonials
- FAQs
- Links

Popular Searches

- Antarctica Travel
- Antarctic Tours
- Antarctic Cruise
- Spitsbergen & Svalbard Cruises
- Kimberley Cruises
- Papua New Guinea Tours
- Greenland Cruise



Association of Arctic Expedition Cruise Operators **AECO**

